

Todd's partials

Two variations on common Syncopation methods.

by Todd Bishop
www.pdxdrummer.com
shipdrummer.blogspot.com

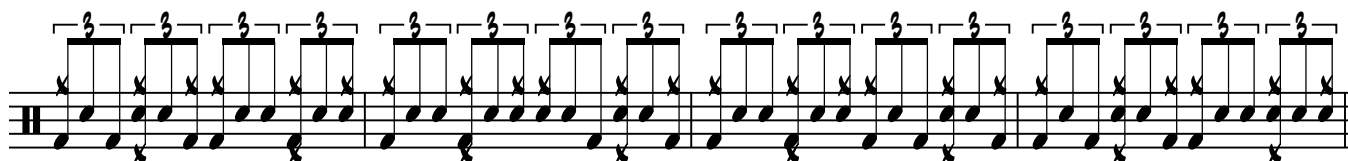
We'll use this familiar passage from Syncopation as an example:



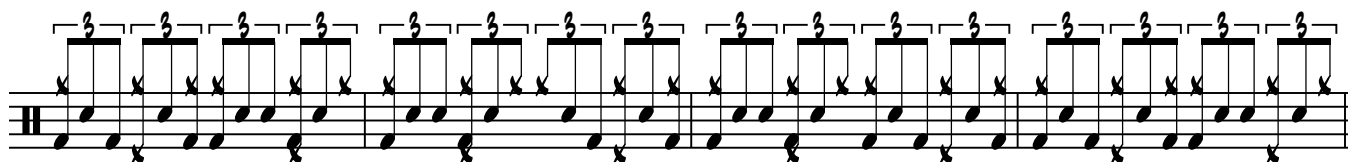
1. A quick sketch of a common interpretation- melody line played on BD, swung, with triplets filled out on SD:



Add jazz time with the cymbal and hi-hat:



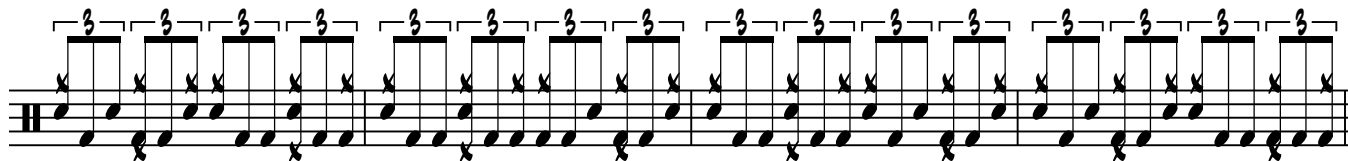
My variation: no SD notes along with the cymbal:



2. Another common method, the reverse of the above- SD plays the melody, BD fills in:



With time added:



My variation: no doubles or multiples on the BD. Select in favor of last partial, and against the first:

