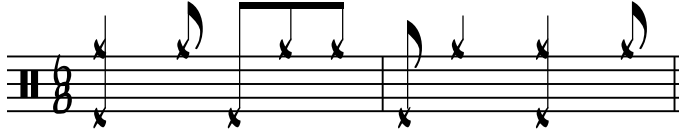


Afro-Cuban in 6/8 and 3/4

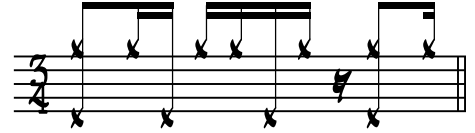
Visit <http://shipdrummer.blogspot.com> for information.

Todd Bishop
www.pdxdrummer.com
shipdrummer.blogspot.com

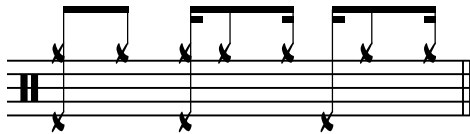
Basic pattern with foot playing 6/8 pulse:



Converted to one measure of 3/4:



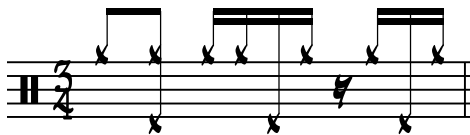
3/4 pattern with foot playing 3/4 pulse:



Converted to two measures of 6/8:



3/4 pattern with foot playing jazz-like off-beats:



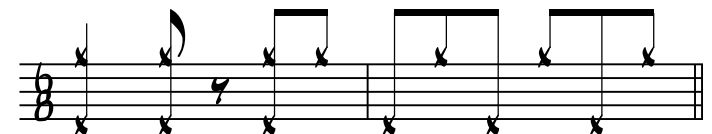
Converted to 6/8:



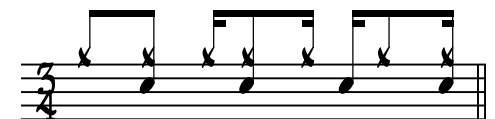
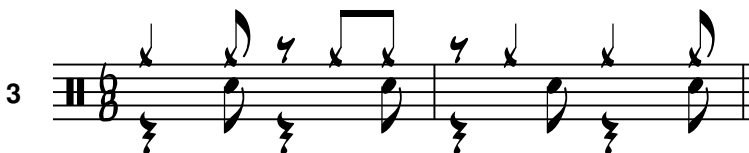
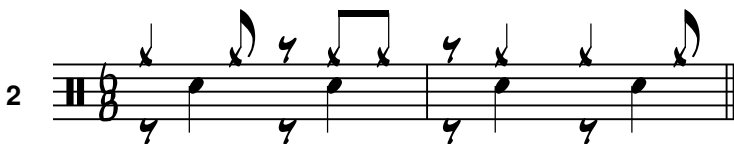
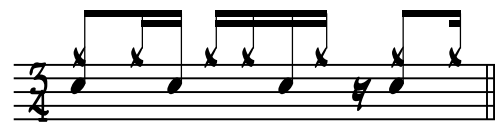
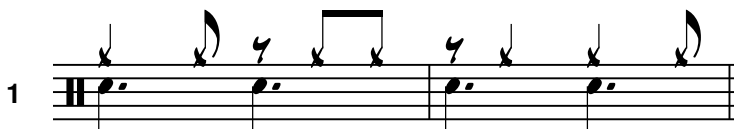
3/4 with foot playing 8th notes:



Converted to 6/8:



Basic coordination patterns converted from 6/8 to 3/4:



12

Musical notation for measure 12, left staff. It features a treble clef, a key signature of one flat (Bb), and a 6/8 time signature. The notation includes eighth and sixteenth notes with stems, and rests.

Musical notation for measure 12, right staff. It features a treble clef, a key signature of one flat (Bb), and a 3/4 time signature. The notation includes eighth and sixteenth notes with stems, and rests.

13

Musical notation for measure 13, left staff. It features a treble clef, a key signature of one flat (Bb), and a 6/8 time signature. The notation includes eighth and sixteenth notes with stems, and rests.

Musical notation for measure 13, right staff. It features a treble clef, a key signature of one flat (Bb), and a 3/4 time signature. The notation includes eighth and sixteenth notes with stems, and rests.

14

Musical notation for measure 14, left staff. It features a treble clef, a key signature of one flat (Bb), and a 6/8 time signature. The notation includes eighth and sixteenth notes with stems, and rests.

Musical notation for measure 14, right staff. It features a treble clef, a key signature of one flat (Bb), and a 3/4 time signature. The notation includes eighth and sixteenth notes with stems, and rests.

15

Musical notation for measure 15, left staff. It features a treble clef, a key signature of one flat (Bb), and a 6/8 time signature. The notation includes eighth and sixteenth notes with stems, and rests.

Musical notation for measure 15, right staff. It features a treble clef, a key signature of one flat (Bb), and a 3/4 time signature. The notation includes eighth and sixteenth notes with stems, and rests.

16

Musical notation for measure 16, left staff. It features a treble clef, a key signature of one flat (Bb), and a 6/8 time signature. The notation includes eighth and sixteenth notes with stems, and rests.

Musical notation for measure 16, right staff. It features a treble clef, a key signature of one flat (Bb), and a 3/4 time signature. The notation includes eighth and sixteenth notes with stems, and rests.

17

Musical notation for measure 17, left staff. It features a treble clef, a key signature of one flat (Bb), and a 6/8 time signature. The notation includes eighth and sixteenth notes with stems, and rests.

Musical notation for measure 17, right staff. It features a treble clef, a key signature of one flat (Bb), and a 3/4 time signature. The notation includes eighth and sixteenth notes with stems, and rests.

18

Musical notation for measure 18, left staff. It features a treble clef, a key signature of one flat (Bb), and a 6/8 time signature. The notation includes eighth and sixteenth notes with stems, and rests.

Musical notation for measure 18, right staff. It features a treble clef, a key signature of one flat (Bb), and a 3/4 time signature. The notation includes eighth and sixteenth notes with stems, and rests.