

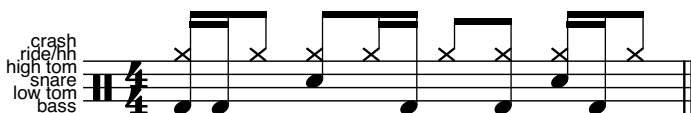
Filling in funk beats - 01

An idea in development

Todd Bishop

www.cruiseshipdrummer.com

Original groove:



Free 8ths to fill:



Easy ghost notes added:



Moved to snare:



Rhythm of drum part:



Rhythm of bass drum part:



Drum rhythm as accented singles:



Bass drum rhythm as accented singles:



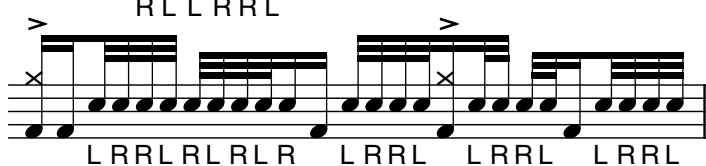
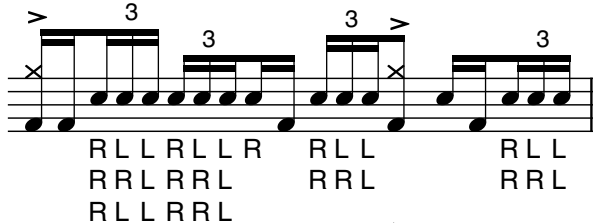
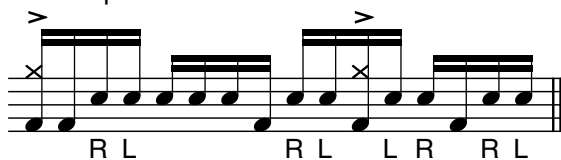
BD on the beat = crashes, everything else = fills:



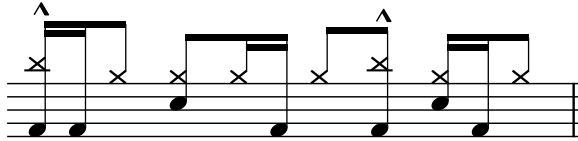
All BD = crashes, everything else = fills:



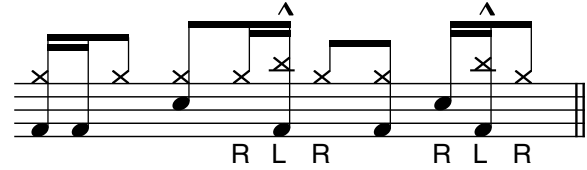
Fill examples:



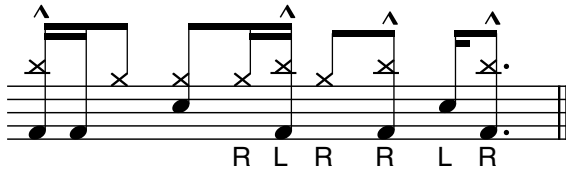
Groove with crashes on the 8ths:



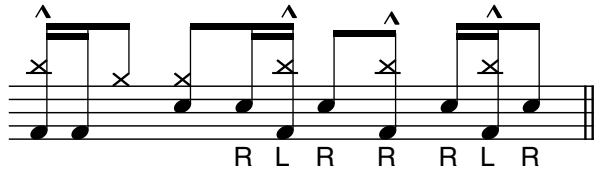
Groove with crashes on the es/as:



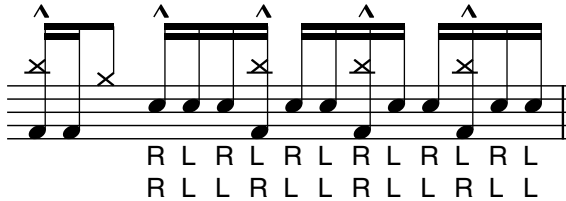
Groove with crashes on all single BDs:



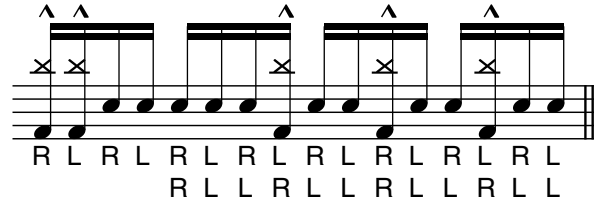
Crashes plus supporting SD:



Running 16ths starting on 2:



All BD = crashes, filling in all 16hs:



Partial measure crashes/fills:

