

# KICKS AND SET-UPS

## USING SYNCOPATION

THE KICKS AS WRITTEN IN A CHART OR  
LEADSHEET, AND THE SYNCOPATION  
EXERCISES THAT REPRESENT THEM:

TODD BISHOP

PP 10-11, #1, 8, 12

PP 10-11, #2, 5, 13

PP16-17, #4, 7, 9

PP16-17, #1, 13, 14



PP 10-11, #3, 6, 9

PP 10-11, #4, 7, 10

PP16-17, #2, 5, 15

PP16-17, #3, 6, 8



P 11, #14

P 11, #15

P 16, #11

P 16, #12



HOW TO READ THE EXERCISES:

BECOMES:

PLAYED:



BECOMES:

OR:

PLAYED:

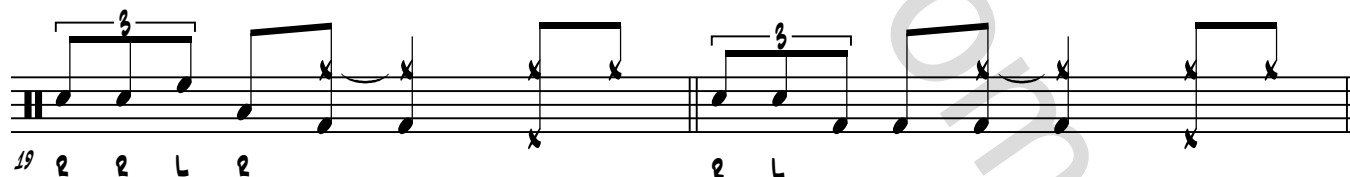
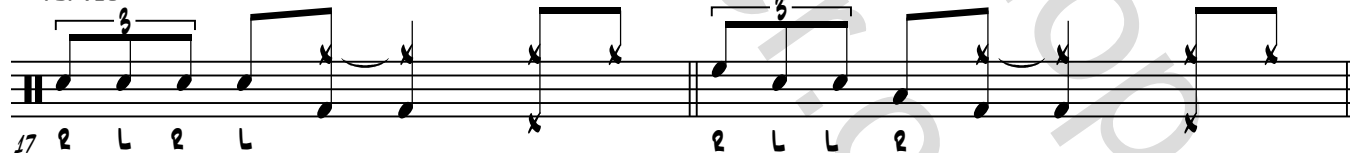
OR:



BECOMES:



PLAYED:



## KICKS AND SET-UPS

2

PLAYED:

21

R L R L R

23

R R L L R R L R R L

25

R L L R R R L L R

27

R L R L R L R L R

29

R R L L R R L L R R L R R L R L L R

31

R L L R R L L R R R L L R L L R

### NOTES:

- APPLY TO SYNCOPATION, PP 10-11, 16-17, 22-23
- SLASH MARKS = PLAY TIME
- 8TH NOTES ARE SWUNG
- ON P. 10 EXERCISES 1-4, ALSO PLAY SET UP WITH FLAM OR RUFF
- ON PP. 10-11, ALSO PLAY SET UPS WITH HANDS TOGETHER ON SD/TOM
- PRACTICE FIGURES AS FOLLOWS:
  - 3 BARS TIME/1 BAR FIGURE
  - 1 BAR TIME/1 BAR FIGURE
  - AS IN SYNCOPATION, 4 TIMES IN A ROW