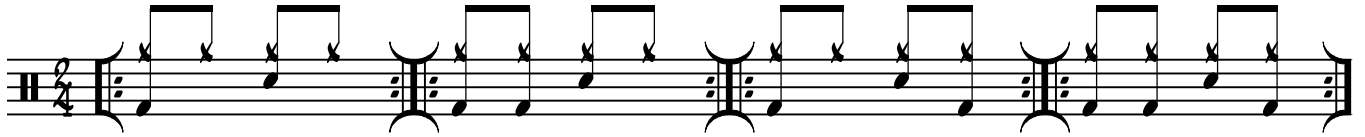


# Kristen's rock micro-syllabus

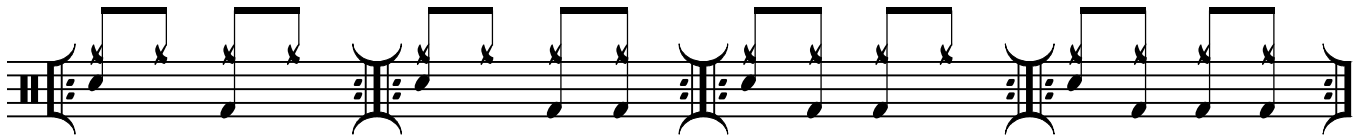
Memorize, then improvise.

Todd Bishop  
www.pdxdrummer.com  
shipdrummer.blogspot.com

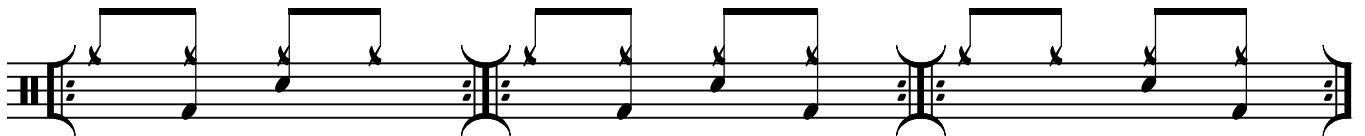
## Basic beats:



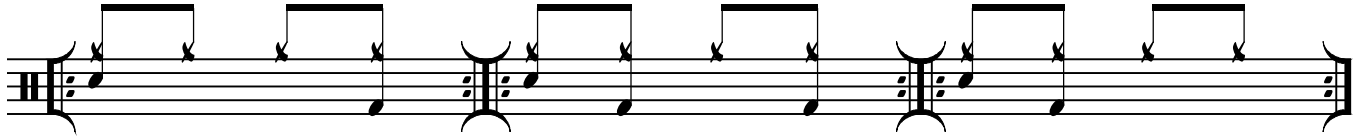
## Backwards:



## No bass on 1:



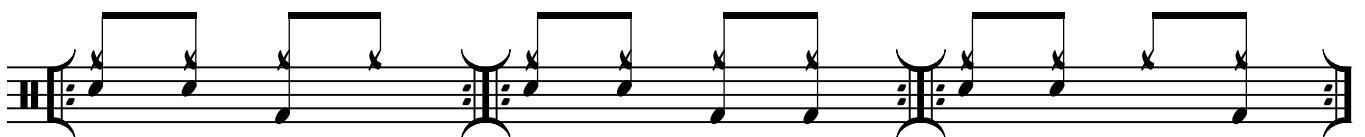
## Backwards:



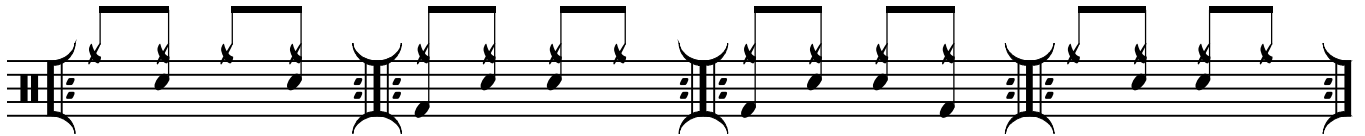
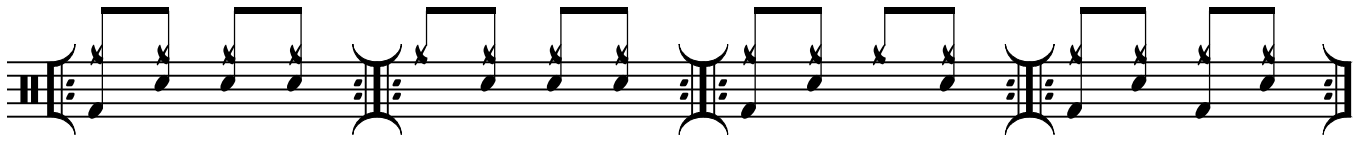
## Snare variations:



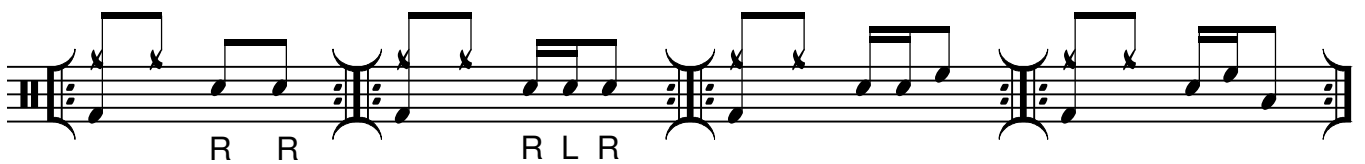
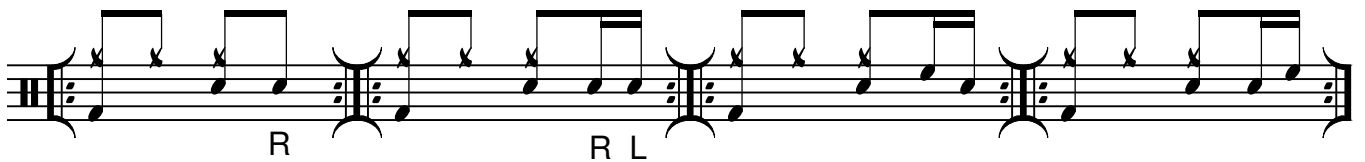
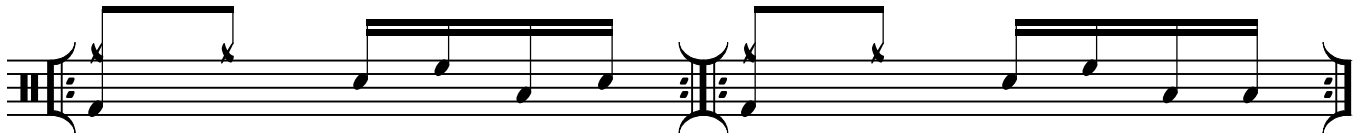
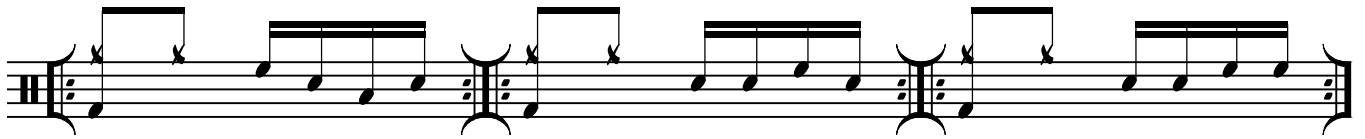
## Backwards:



More snare variations:



16th note fills:



**Crashes**

On 1 & 3:

Musical notation for crash on 1 & 3, measure 45. The staff shows a sequence of notes with accents (^) on the first and third beats, indicating the timing of the crash.

Musical notation for crash on 1 & 3, measure 47. The staff shows a sequence of notes with accents (^) on the first and third beats.

On 2 & 4:

Musical notation for crash on 2 & 4, measure 49. The staff shows a sequence of notes with accents (^) on the second and fourth beats.

Musical notation for crash on 2 & 4, measure 51. The staff shows a sequence of notes with accents (^) on the second and fourth beats.

Musical notation for crash on 2 & 4, measure 53. The staff shows a sequence of notes with accents (^) on the second and fourth beats.

**Changing ride voice**

hi-hat

crash

Musical notation for changing ride voice, measures 55-56. The staff shows a sequence of notes with accents (^) on the first and third beats, indicating the timing of the hi-hat and crash.

floor tom

floor tom "jungle"

Musical notation for changing ride voice, measures 57-58. The staff shows a sequence of notes with accents (^) on the first and third beats, indicating the timing of the floor tom and floor tom "jungle".