

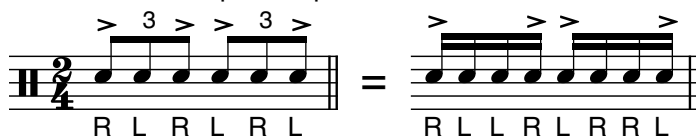
# Reed tweak: paradiddle inversions to toms

Use with Syncopation pp. 6-7, 10-11, 30-45

Todd Bishop

www.cruiseshipdrummer.com

Accented triplets to paradiddle inversion:



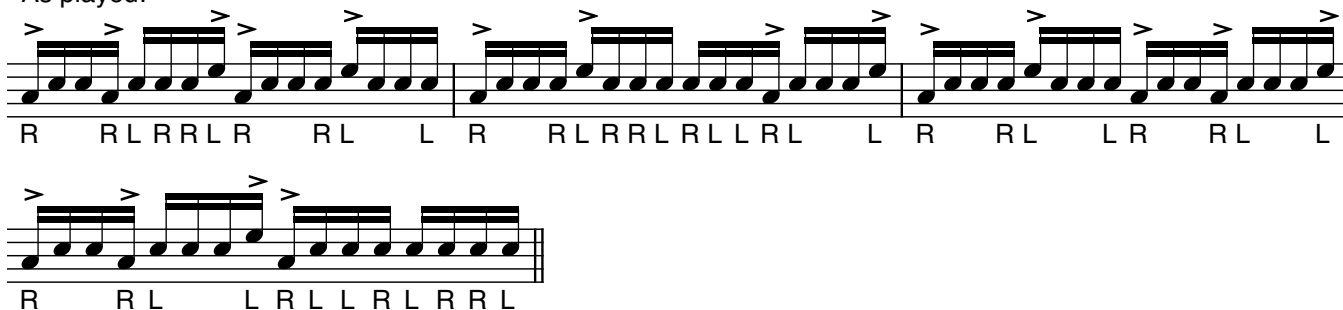
Accents on toms:



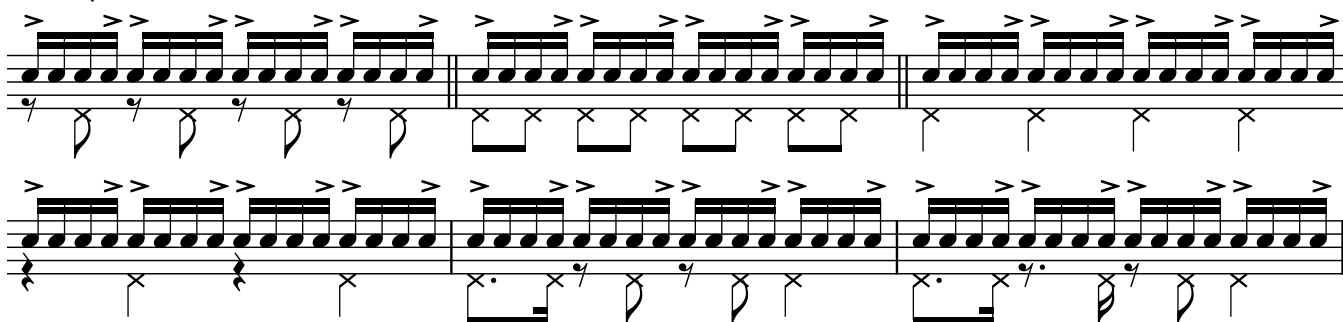
Syncopation Exercise One - p. 38, line 1 - as written:



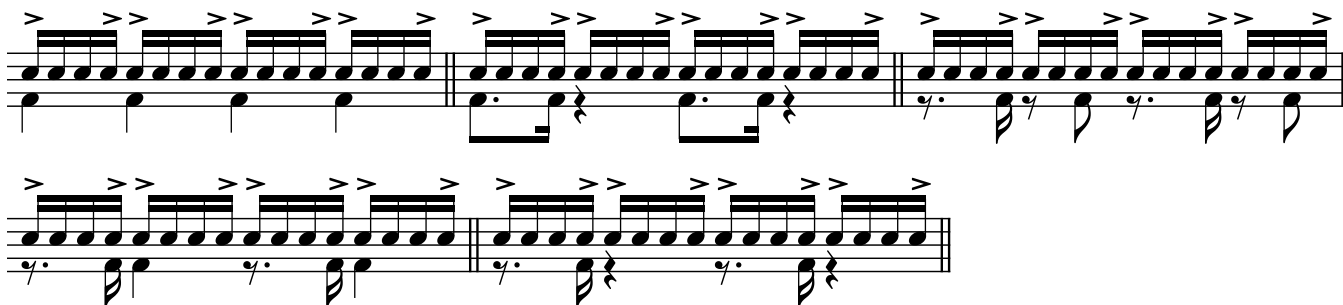
As played:



Hihat possibilities:



Bass drum possibilities:



Also lead with the left hand:

