

Son clave basic coordination

hands only

Todd Bishop

www.cruiseshipdrummer.com

www.pdxdrummer.com

Logical patterns derived from clave:

RH/bell, FT shell
LH/rim click

Building the Mambo/Cascara bell pattern:

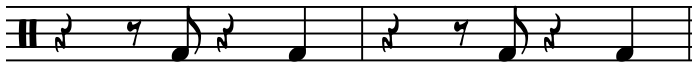
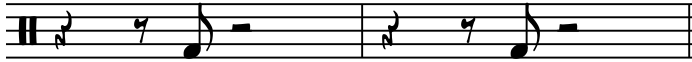
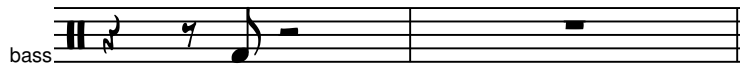
Complete:

Mozambique, complete:

Building another common Mambo pattern:

Complete:

Add these RF/LF parts individually, then combine them:



Also play clave w/left foot, along with this left hand part:

