

Two hemiola coordination patterns

in common meters with inversions

Todd Bishop

www.cruiseshipdrummer.com

Pattern 1 - in 3/4 repeating, and inversions:

Musical notation for Pattern 1 in 3/4 time. It consists of three measures. The first measure is labeled with a '3' and a '4' in a box, indicating the time signature. The notation includes three staves: cym (cymbal), snare, and bass. The cym part has 'x' marks above the notes. The snare and bass parts have notes on a single staff.

Each two beats of Pattern 1:

Musical notation showing two beats of Pattern 1 in 2/4 time. It consists of three measures. The first measure is labeled with a '2' and a '4' in a box, indicating the time signature. The notation includes three staves: cym, snare, and bass.

Inversions:

Musical notation showing inverted two-beat patterns of Pattern 1 in 2/4 time. It consists of three measures. The notation includes three staves: cym, snare, and bass.

Repeating pattern in 4/4:

Musical notation showing a repeating pattern of Pattern 1 in 4/4 time. It consists of a single long staff with a '4' and '4' in a box, indicating the time signature. The notation includes three staves: cym, snare, and bass.

Each measure of the repeating pattern in 4 - simplified, complete, inverted

Simplified:

Simplified notation for one measure of the repeating pattern in 4/4 time. It consists of a single staff with a '4' and '4' in a box, indicating the time signature. The notation includes three staves: cym, snare, and bass.

Inversions:

Inverted simplified notation for one measure of the repeating pattern in 4/4 time. It consists of a single staff with a '4' and '4' in a box, indicating the time signature. The notation includes three staves: cym, snare, and bass.

Complete:

Complete notation for one measure of the repeating pattern in 4/4 time. It consists of a single staff with a '4' and '4' in a box, indicating the time signature. The notation includes three staves: cym, snare, and bass.

Inverted complete notation for one measure of the repeating pattern in 4/4 time. It consists of a single staff with a '4' and '4' in a box, indicating the time signature. The notation includes three staves: cym, snare, and bass.

Simplified:

Simplified notation for one measure of the repeating pattern in 4/4 time. It consists of a single staff with a '4' and '4' in a box, indicating the time signature. The notation includes three staves: cym, snare, and bass.

Inverted simplified notation for one measure of the repeating pattern in 4/4 time. It consists of a single staff with a '4' and '4' in a box, indicating the time signature. The notation includes three staves: cym, snare, and bass.

Complete:

Complete notation for one measure of the repeating pattern in 4/4 time. It consists of a single staff with a '4' and '4' in a box, indicating the time signature. The notation includes three staves: cym, snare, and bass.

Inverted complete notation for one measure of the repeating pattern in 4/4 time. It consists of a single staff with a '4' and '4' in a box, indicating the time signature. The notation includes three staves: cym, snare, and bass.

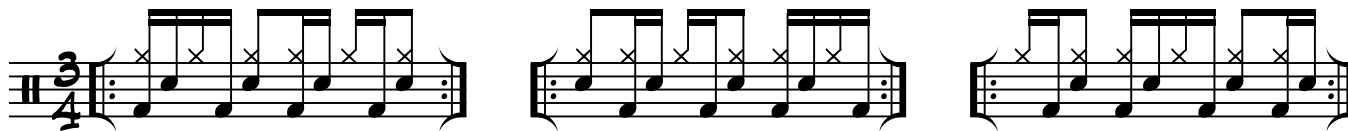
Complete:

Complete notation for one measure of the repeating pattern in 4/4 time. It consists of a single staff with a '4' and '4' in a box, indicating the time signature. The notation includes three staves: cym, snare, and bass.

Inverted complete notation for one measure of the repeating pattern in 4/4 time. It consists of a single staff with a '4' and '4' in a box, indicating the time signature. The notation includes three staves: cym, snare, and bass.

Two hemiola coordination patterns

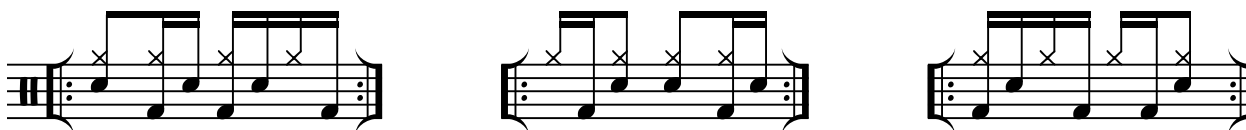
Pattern 2 - in 3/4 repeating, and inversions:



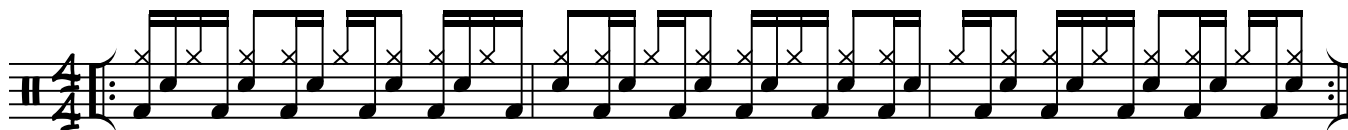
Each two beats of Pattern 2:



Inversions:

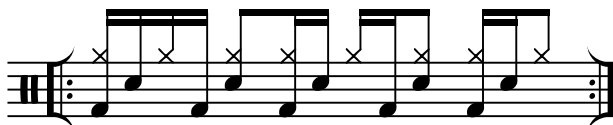


Repeating pattern in 4/4:

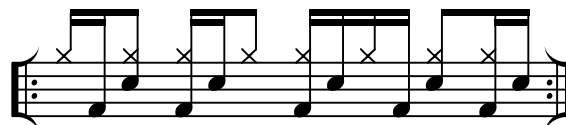


Each measure of the repeating pattern in 4 - simplified, complete, inverted

Simplified:



Inversions:



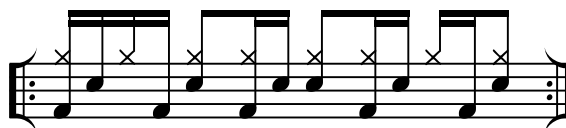
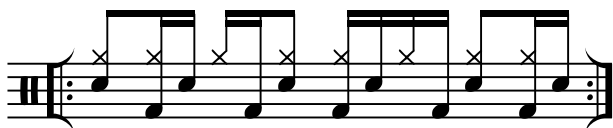
Complete:



Simplified:



Complete:



Complete:

