

# Analysis: Ed Blackwell - Strength and Courage

Joe Lovano  
Sounds of Joy Enja

Drums by Ed Blackwell  
Transcription by Todd Bishop  
[www.cruiseshipdrummer.com](http://www.cruiseshipdrummer.com)

♩ = 238 Orchestration of this rhythm:

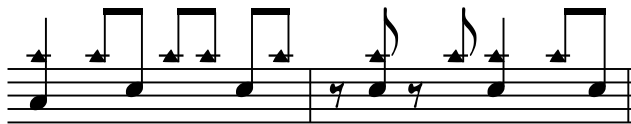
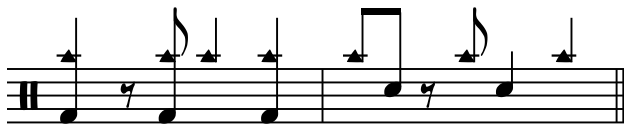
hihat

Variations on a phrase:

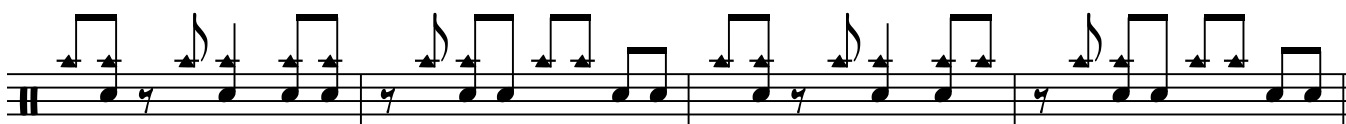
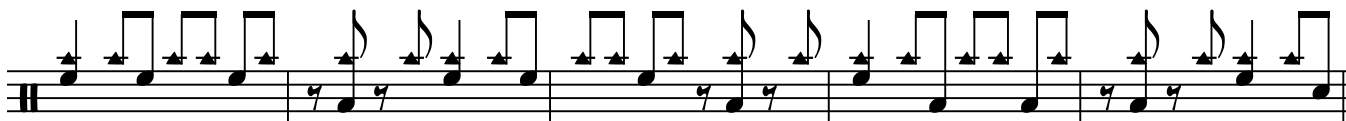
Five note pattern:



Latin patterns/phrases:



81



Bop comping phrases:

The first row contains three staves of rhythmic notation. The first staff has a series of eighth notes with accents, followed by a quarter note. The second staff has a series of eighth notes with accents, followed by a quarter note. The third staff has a series of eighth notes with accents, followed by a quarter note.

The second row contains two staves. The first staff has a series of eighth notes with accents, followed by a quarter note. The second staff has a series of eighth notes with accents, followed by a quarter note.

The third row contains one long staff with a series of eighth notes with accents, followed by a quarter note.

The fourth row contains two staves. The first staff has a series of eighth notes with accents, followed by a quarter note. The second staff has a series of eighth notes with accents, followed by a quarter note.

One measure solo ideas:

The first row contains three staves. The first staff has a triplet of eighth notes with accents, followed by a quarter note. The second staff has a triplet of eighth notes with accents, followed by a quarter note. The third staff has a triplet of eighth notes with accents, followed by a quarter note.

The second row contains three staves. The first staff has a triplet of eighth notes with accents, followed by a quarter note. The second staff has a triplet of eighth notes with accents, followed by a quarter note. The third staff has a triplet of eighth notes with accents, followed by a quarter note.

Fingerings are indicated below the notes: L L R L L L R L, R R L L R R L L, R R L R L R L, R R R R L L R R, R R L R L R L.

Meter-within-meter phrases:

The first row contains one long staff with a series of eighth notes with accents, followed by a quarter note.

The second row contains one long staff with a series of eighth notes with accents, followed by a quarter note.

The third row contains one long staff with a series of eighth notes with accents, followed by a quarter note.