

All the grooves from Funkadelic's Maggot Brain

Funkadelic
Maggot Brain Westbound

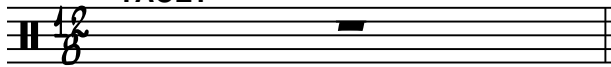
more or less

Drums by Tiki Fulwood
Transcribed by Todd Bishop
www.pdxdrummer.com
www.cruiseshipdrummer.com

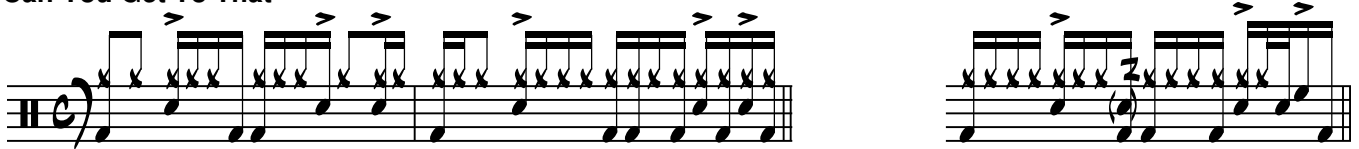
SIDE A

Maggot Brain

TACET



Can You Get To That

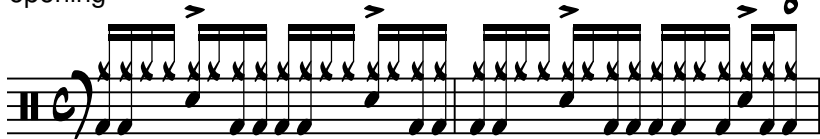


Hit It And Quit It



You And Your Folks, Me And My Folks

opening



A section



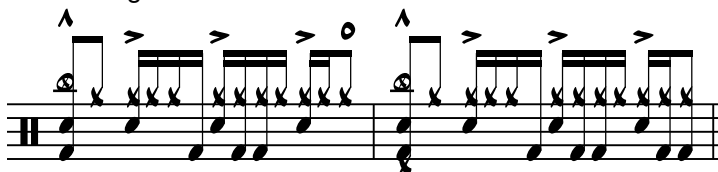
Bridge - highly variable



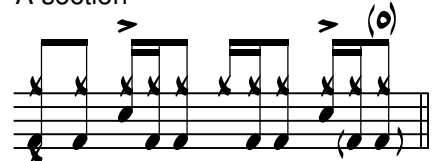
SIDE B

Super Stupid

intro/bridge



A section



notes in parenthesis optional

Back In Our Minds

A section

Musical notation for the A section of 'Back In Our Minds'. It consists of a single staff with a treble clef and a key signature of one flat (B-flat). The piece is in 4/4 time. The notation features a complex, repetitive rhythmic pattern of eighth and sixteenth notes, often beamed together. There are several accents (>) and a fermata (O) over certain notes. The piece ends with a double bar line.

B section

Musical notation for the B section of 'Back In Our Minds'. It consists of a single staff with a treble clef and a key signature of one flat (B-flat). The piece is in 4/4 time. The notation features a complex, repetitive rhythmic pattern of eighth and sixteenth notes, often beamed together. There are several accents (>) and a fermata (O) over certain notes. The piece ends with a double bar line.

Wars Of Armageddon

Musical notation for 'Wars Of Armageddon'. It consists of a single staff with a treble clef and a key signature of one flat (B-flat). The piece is in 4/4 time. The notation features a complex, repetitive rhythmic pattern of eighth and sixteenth notes, often beamed together. There are several accents (>) and a fermata (O) over certain notes. The piece ends with a double bar line.