

# Transcription: Max Roach / Flossie Lou - solo

Clifford Brown & Max Roach  
At Basin Street Emarcy

Beginning at 2:39

Drums by Max Roach  
Transcription by Todd Bishop  
www.cruiseshipdrummer.com

**♩ = 200**

ride cym  
high tom  
snare  
low tom  
bass  
hihat/foot

The transcription is written on a five-line staff with a 4/4 time signature. It begins with a tempo marking of ♩ = 200. The notation includes various rhythmic patterns: eighth notes, quarter notes, and eighth-note triplets. Accents (>) are placed over many notes. Triplet markings (3) are used above several groups of notes. The piece concludes with a double bar line and a '2' above it, indicating a two-measure ending. Measure numbers 5, 8, 11, 14, 17, 20, 23, and 26 are printed at the start of their respective lines. Specific annotations include 'stick shots' with an accent (^) above notes in measures 23 and 24, and 'straight 8ths' with a bracket above a group of eighth notes in measure 26.

5

8

11

14

17

20

23

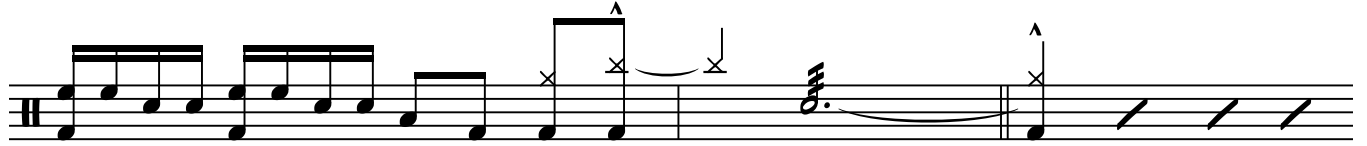
26

stick shots

straight 8ths



29



31

