

Basic kicks and set-ups using Syncopation

Swing all 8th notes.

Exercise as written:



Ignore BD part, add ties. Tied note is our ensemble hit, remaining 8th(s) are the set up notes.



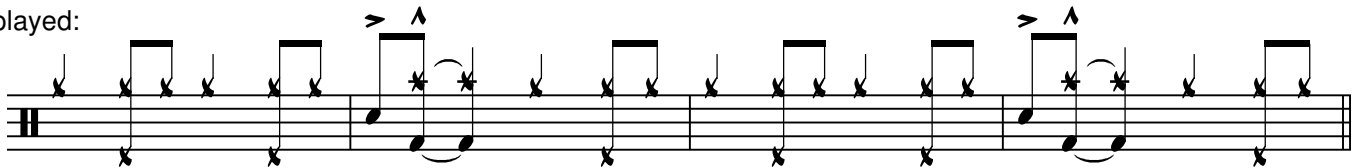
Interpret remaining quarters as slashes, an indication to play time in the style of the piece.



Play time on first and third measures of each line:



As played:



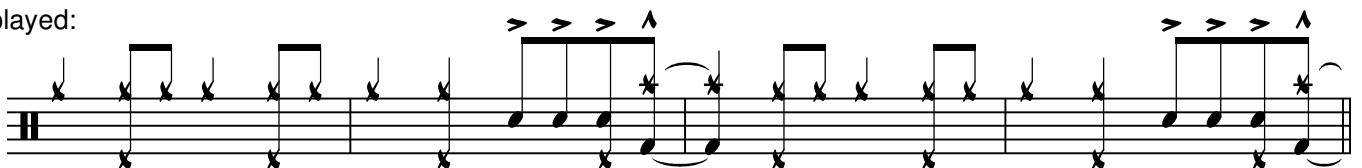
Multi-beat fills - as written:



With ties:



As played:



8th rest at beginning of set up:

Musical notation on a five-line staff with a treble clef and a key signature of one flat. The piece consists of 12 measures. The first measure contains a whole rest on the 8th line. The subsequent measures feature a rhythmic pattern of eighth notes and quarter notes, with various accents and slurs. The notation includes dynamic markings such as accents (>) and accents with flags (^).

Moving set up around the drums:

Musical notation on a five-line staff with a treble clef and a key signature of one flat. The piece consists of 12 measures. The first measure contains a whole rest on the 8th line. The subsequent measures feature a rhythmic pattern of eighth notes and quarter notes, with various accents and slurs. The notation includes dynamic markings such as accents (>) and accents with flags (^).

Musical notation on a five-line staff with a treble clef and a key signature of one flat. The piece consists of 12 measures. The first measure contains a whole rest on the 8th line. The subsequent measures feature a rhythmic pattern of eighth notes and quarter notes, with various accents and slurs. The notation includes dynamic markings such as accents (>) and accents with flags (^).

Adding embellishments:

Musical notation on a five-line staff with a treble clef and a key signature of one flat. The piece consists of 12 measures. The first measure contains a whole rest on the 8th line. The subsequent measures feature a rhythmic pattern of eighth notes and quarter notes, with various accents and slurs. The notation includes dynamic markings such as accents (>) and accents with flags (^).

Setting up low and hitting high:

Musical notation on a five-line staff with a treble clef and a key signature of one flat. The piece consists of 12 measures. The first measure contains a whole rest on the 8th line. The subsequent measures feature a rhythmic pattern of eighth notes and quarter notes, with various accents and slurs. The notation includes dynamic markings such as accents (>) and accents with flags (^).

Musical notation on a five-line staff with a treble clef and a key signature of one flat. The piece consists of 12 measures. The first measure contains a whole rest on the 8th line. The subsequent measures feature a rhythmic pattern of eighth notes and quarter notes, with various accents and slurs. The notation includes dynamic markings such as accents (>) and accents with flags (^).

Marking off phrase beginnings may be helpful for novices. Be careful about playing this note too strong- habitual strong accenting on 1 is a classic beginner mistake.

Musical notation on a five-line staff with a treble clef and a key signature of one flat. The piece consists of 12 measures. The first measure contains a whole rest on the 8th line. The subsequent measures feature a rhythmic pattern of eighth notes and quarter notes, with various accents and slurs. The notation includes dynamic markings such as accents (>) and accents with flags (^).